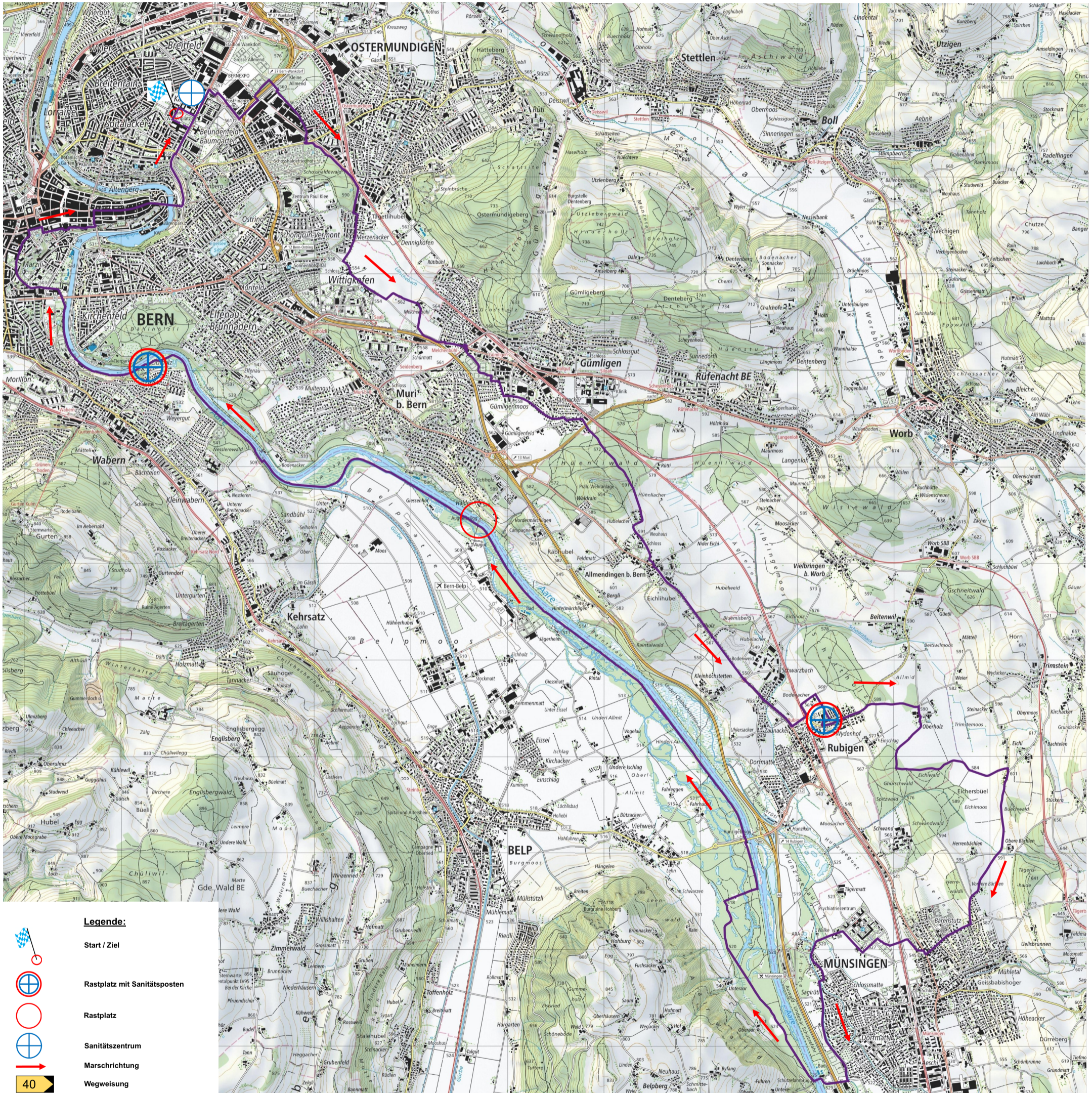


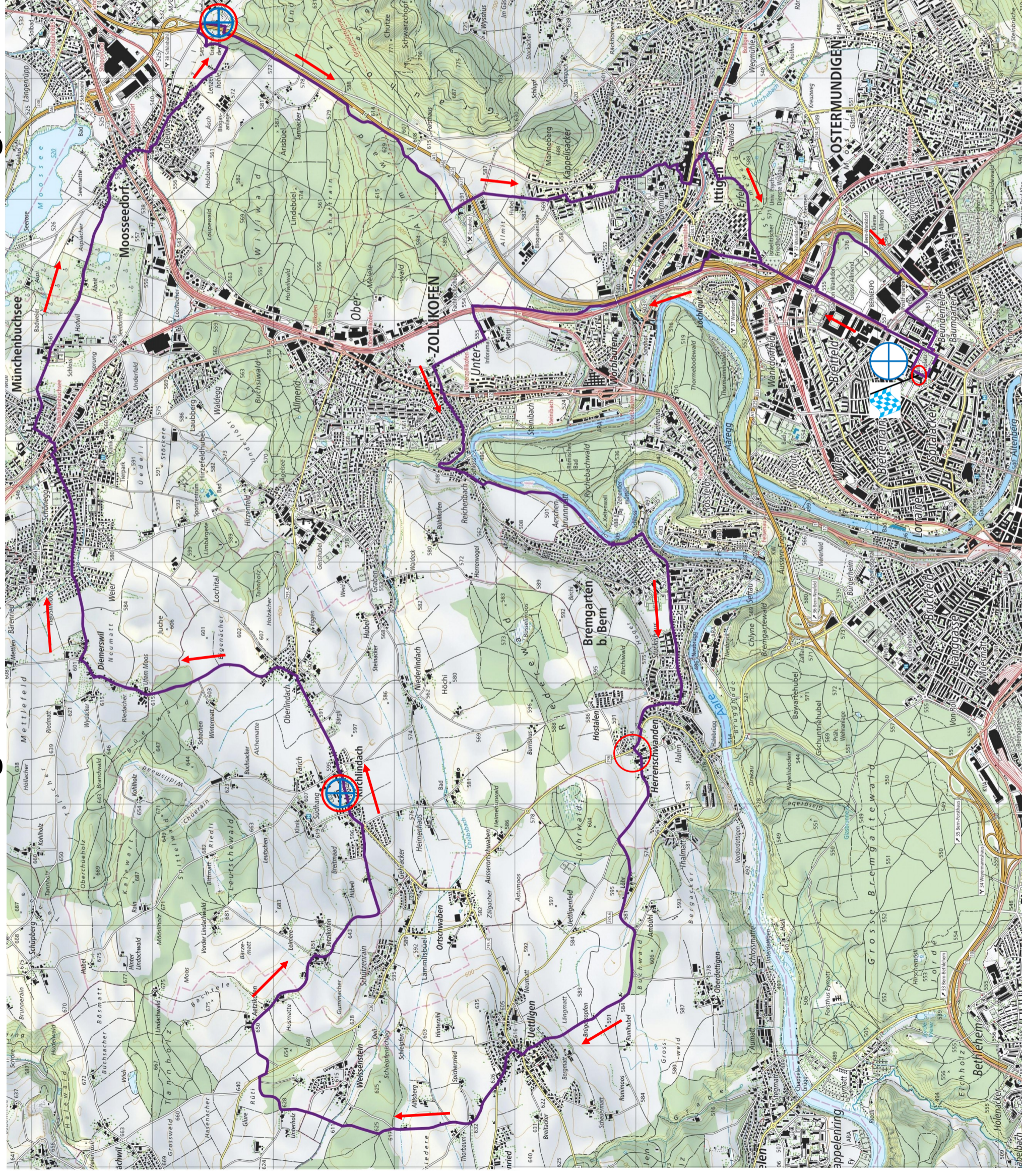
# Schweizerischer Zweitagemarsch

## 40 km Strecke vom Samstag, 1. Juni 2024





# Schweizerischer Zweitagemarsch, 40km Strecke vom Sonntag, 2. Juni 2024

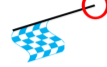







Kleine Anpassungen der Strecke bleiben ausdrücklich vorbehalten

Stand 02.05.2024

Masstab 1:25'000 | 500m | Geodaten © swisstopo

## Legende:

-  Start / Ziel
-  Rastplatz
-  Rastplatz mit Sanitätsposten
-  Sanitätszentrum
-  Marschrichtung
-  Wegweisung